



# Flight Plan & Site Survey

Created using **RPAS Wilco**®

Reference No:	59D2F5
Title:	Alma (633) TERRAIN 2635 ROUTE DU LAC O ALMA
Pilot Name:	Alain Carpentier
Pilot Certificate:	PC2306520264
Flight Start:	May 27, 2024 3:17 PM
Flight End:	May 27, 2024 11:59 PM
Flight Address:	Lat: 48.53753247744222 Lng: -71.70364749101165
Flight Area (Latitude):	48° 32' 15.12" N ( 48.538 )
Flight Area (Longitude):	71° 42' 13.13" W ( -71.704 )
Altitude - Radius:	<b>Alt:</b> 400 ft - <b>Rad:</b> 926.0 m ( 0.5 nm)
Classification:	RESTRICTED
FIR - Contact:	CZUL - 506-867-9047

#### Notes:

Your flight is in restricted airspace.

Please obtain approval from controlling agency found in the DAH.

Please ensure you received all required authorizations prior to flight.

#### Disclaimer

This Site Survey was created using RPAS Wilco by AIM Robotics. The flight plan contained is intended only for RPAS flights on the date/time and location specified. The user accepts all responsibility for the accuracy and completeness of the information contained.

For the complete Terms & Conditions, see

<https://rpaswilco.com/#/tnc>

#### Included

- Site Survey
- Obstacles (if available)
- Nearby Aerodromes
- Canadian Aviation Regulations
- GFA
- Aerodrome Supplements
  - METAR & TAF (if available)
  - NOTAMs
  - CFS





## Flight Map



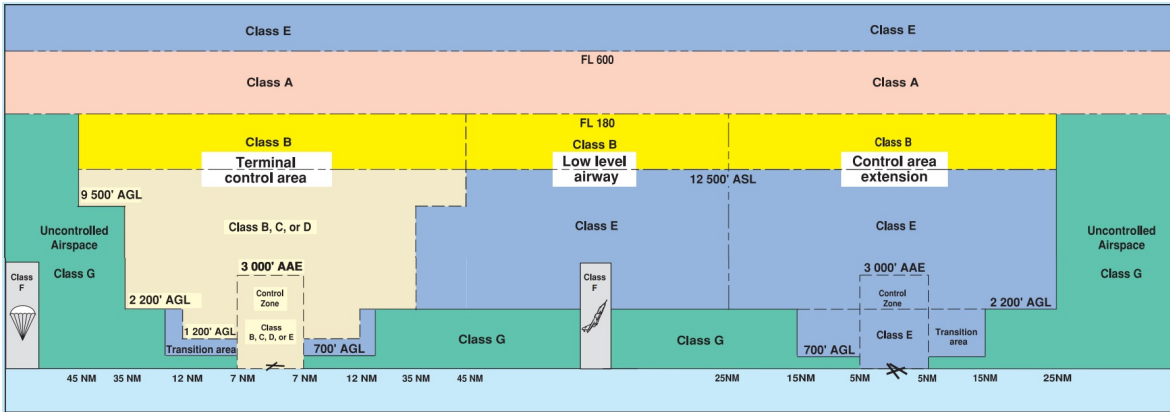
## RPAS Specification

- **Manufacturer:**  
MAAC
- **Model:**  
MODEL AIRPLANE (Apprentice)
- **Registration Number:**  
C-2315325447
- **Eligible for advanced operations:**  
Yes
- **Manufacturer RPAS safety assurance:**
  - Controlled Airspace: YES
  - Near People: NO
  - Over People: NO

## MAP Details

	Latitude	Longitude
 MODEL	48° 32' 15.12" N ( 48.538 )	71° 42' 13.13" W ( -71.704 )
 Pilot	( )	( )
 Payload Op.	( )	( )
 Observer	( )	( )
	Latitude	Longitude
	Latitude	Longitude

## Airspace Classification



## Overlying Airspaces

Class	Name	Floor	Ceiling
E	Bagotville, QC TCA	700AGL	12500MSL
B	Bagotville, QC TCA	12500MSL	18000MSL
R	CYR651 ALMA, QC 0csl by NOTAM	SFC	6000MSL
E	Roberval, QC CAE	2200AGL	12500MSL
B	Roberval, QC CAE	12500MSL	18000MSL
R	CYR653 ALMA, QC 0csl by NOTAM	2000MSL	8000MSL

## Nearest Aerodromes & Distance from Operation

ALMA (CYTF - AERODROME - Cert)	Lat: 48.508	Long: -71.641	5.663KM	3.06NM	SE
ALMA (RIVIERE LA GRANDE DECHARGE) (CGD2 - WATERDROME - Reg)	Lat: 48.563	Long: -71.616	7.046KM	3.8NM	NE
ST-CHARLES-DE-BOURGET (CSA5 - WATERDROME - Reg)	Lat: 48.509	Long: -71.464	17.932KM	9.68NM	E
ROBERVAL (CYRJ - AERODROME - Cert)	Lat: 48.52	Long: -72.266	41.456KM	22.38NM	W

**QUEBEC**

**AERODROME/FACILITY DIRECTORY**

**ALMA QC**

**CYTF**

<b>REF</b>	N48 30 31 W71 38 29 2.2S 17°W (2014) UTC-5(4) Elev 448' A5010 LO6 LO7 HI5 HI6 CAP	
<b>OPR</b>	CIDAL 418-669-5104 13-21Z† Mon-Fri Cert Ldg fees, tml fees	
<b>PF</b>	A-1 C-2,3,4,5,6	
<b>FLT PLN</b>	(bil)	
<b>FIC</b>	Québec 866-GOMÉTÉO or 866-WXBRIEF (Toll free within Canada) or 866-541-4105 (Toll free within Canada & USA)	
<b>ACC</b>	Montréal 800-633-1353	
<b>WX</b>	AUTO 418-669-5406 (see COMM)	
<b>SERVICES</b>	1230-2130Z† Mon-Fri exc hols, O/T 1 hr PN 418-480-8686. Call out chg may be levied for one or more svcs.	
<b>FUEL</b>	100LL (fuel management tml avbl, ctc opr to receive code), JA-1 (FSII avbl), SP	
<b>S</b>	1(Ltd),2,3,4,5,6	
<b>JASU</b>	Electric start 10/15	
<b>RWY DATA</b>	Rwy 13(131°)/31(311°) 5000x100 ASPH Rwy 31 down 0.37%	
<b>RWY CERT</b>	Rwy 13/31 AGN IIIA	
<b>TWY CERT</b>	Twy A AGN II	
<b>RCR</b>	Opr CRFI Win maint O/R 1530-2130Z† Mon-Fri exc hols, O/T 3 hrs PN 418-480-8686, call out chg may be levied. PLR/PCN	
<b>LIGHTING</b>	13-AO(TE ME), 31-AO(TE ME) ARCAL-122.35 type K	
<b>COMM</b>	(bil)	
<b>CLNC DEL</b>	Prior dep pilots must ctc Bagotville Tml for IFR clnc at 888-813-8508.	
<b>MF/ATF</b>	UNICOM 1330-2030Z† Mon-Fri, exc hols (CAR 602.98) O/T tfc 122.35 5NM 3500 ASL	
<b>TML</b>	Bagotville 127.2 227.6	
<b>VFR ADV</b>	Bagotville Tml 121.2	
<b>AUTO</b>	123.175	
<b>NAV</b>		
<b>DME</b>	ITF 110.7 Ch 44 N48 30 14 W71 37 47 (458')	
<b>LOC</b>	ITF 110.7 (Rwy 13) LOC reliable only within 10° either side of centreline.	
<b>PRO</b>	Several areas of Class F of restricted airspace (CYRs) have been established in the Alma area for flight testing of Remotely Piloted Aircraft (RPA). These CYRs are activated occasionally by NOTAM with 48 hours prior notice. No person shall operate an aircraft within an active CYR unless the flight has been authorized by the User Agency as stated in the Designated Airspace Handbook (DAH). When CYR651 is active and access to the Alma airport is required, to avoid delays pilots should make prior arrangements with the User Agency for authorization to operate within the CYR. Pilots can contact Alma UNICOM MF 122.35 for authorization but unless the flight is essential such as MEDEVAC, police, emergency, etc., access may be delayed. Once authorized, pilots must enter and exit CYR651 from the northeast and operations are restricted to circuit procedures for arrivals and departures from the airport only. See Alma VTPC for a depiction of the CYRs.	
<b>CAUTION</b>	Parachute jumps over aprt to 12,500 ASL, (DT 12-24Z) May-Sep. Possible win maint eqpt on rwy outside ops hrs. Migratory bird activity Apr-Nov.	

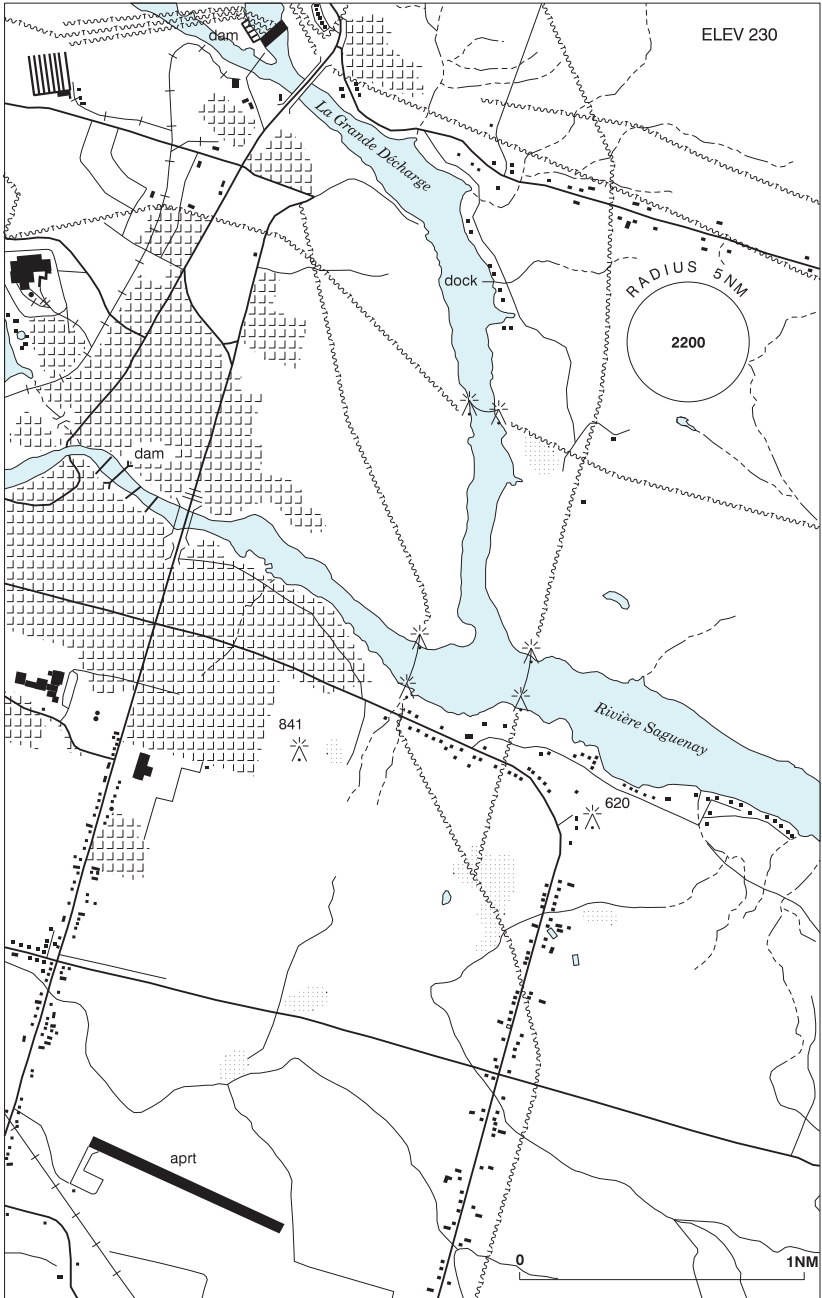
# CANADA WATER AERODROME SUPPLEMENT

Effective 0901Z 21 March 2024 to 0901Z 17 April 2025

AERODROME/FACILITY DIRECTORY B3

## ALMA (RIVIÈRE LA GRANDE DÉCHARGE) QC

CGD2



REF

N48 33 48 W71 36 57 1NE 17°W (2014) UTC-5(4) Elev 230' A5010

# CANADA WATER AERODROME SUPPLEMENT

Effective 0901Z 21 March 2024 to 0901Z 17 April 2025

## B4 AERODROME/FACILITY DIRECTORY

### ALMA (RIVIÈRE LA GRANDE DÉCHARGE) QC (Cont'd)

CGD2

<b>OPR</b>	Air Maintenance/Martin Bouchard 418-668-8745 Fax 418-668-6259 Reg
<b>PF</b>	B-1 C-2,3,4,5
<b>FLT PLN</b>	(bil)
<b>FIC</b>	Québec 866-GOMÉTÉO or 866-WXBRIEF (Toll free within Canada) or 866-541-4105 (Toll free within Canada & USA)
<b>SERVICES</b>	
<b>OIL</b>	All
<b>S</b>	2,3
<b>A/D DATA</b>	Open water mid-Apr to mid-Nov. Bottom sand and mud.
<b>COMM</b>	
<b>MF/ATF</b>	UNICOM at land A/D 3.5NM SSW 1330-2030Z± Mon-Fri, exc hols (CAR 602.98) O/T tfc 122.35 5NM centred on land A/D 3.5NM SSW 3500 ASL
<b>VFR ADV</b>	(bil) Bagotville Tml 121.2
<b>CAUTION</b>	Ocsl small fishing boats.

### ALPORT BAY ON — See LAKE MUSKOKA / ALPORT BAY

### ARMSTRONG ON

CJF6

<b>REF</b>	N50 15 W89 03 2S 4°W UTC-5(4) Elev 1120' A5008	
<b>OPR</b>	Armstrong Outposts 807-583-2180 (sum), 807-767-0519 (win) Reg Huron Air & Outfitters 807-583-2051 Reg	
<b>PF</b>	B-1 D-2,4,5	
<b>FLT PLN</b>	Pilots to open/close VFR flt plan with London rdo, FISE or by phone	
<b>FIC</b>	London 866-WXBRIEF (Toll free within Canada) or 866-541-4104 (Toll free within Canada & USA)	
<b>SERVICES</b>		
<b>FUEL</b>	100LL	
<b>OIL</b>	100, 15/50	
<b>S</b>	5	
<b>A/D DATA</b>	Open water mid May-Oct. Ski planes in win.	
<b>COMM</b>		
<b>ATF</b>	tfc 122.8 5NM 4100 ASL	

# CANADA WATER AERODROME SUPPLEMENT

Effective 0901Z 21 March 2024 to 0901Z 17 April 2025

AERODROME/FACILITY DIRECTORY B217

## SAGUENAY (HARVEY) QC

CSA8

<b>REF</b>	N48 26 23 W71 07 46 2.5NM WNW 17°W (2014) UTC-5(4) Elev 30' A5010	
<b>OPR</b>	10289221 Canada Inc. 514-797-6725 Reg PPR	
<b>PF</b>	C-1,2,3,4,5,6	
<b>FLT PLN</b>	(bil) <b>FIG</b> Québec 866-GOMÉTÉO or 866-WXBRIEF (Toll free within Canada) or 866-541-4105 (Toll free within Canada & USA)	
<b>SERVICES</b>	<b>S</b> 5,7	
<b>A/D DATA</b>	Open water May-Nov. Dock depth 3' during low tide. Tidal range 12', current 3 kt. Rocks and shoal unmarked at low tide along the shore.	
<b>COMM</b>	<b>TWR</b> Bagotville 126.2 <b>VFR ADV</b> Bagotville Tml 121.2 <b>A/G</b> 122.925	
<b>PRO</b>	Refer to Bagotville VTPC <b>Circuits:</b> Right hand circuits when ldg and tkof to E (CAR 602.96) <b>Depart:</b> Obtain appr fr Bagotville TWR (418-677-4000 Ext 7507) at least 5 min before tkof. Broadcast intentions on 126.2 - Bagotville TWR before tkof. Remain at 1000 ASL or BLW until comm with Bagotville TWR is established; ctc TWR even if you leave the CZ at 1000 ASL or below. Avoid CYRC CZ north of the Saguenay River.	
<b>CAUTION</b>	Marked P-lines aprx 250 ASL (110 AGL) 1.5NM E Frequent low alt heli activity E of Dubuc bridge	

## SAGUENAY / ST-CHARLES-DE-BOURGET QC

CSA5

<b>REF</b>	N48 30 34 W71 27 50 5.8WNW St-Charles-de-Bourget 17°W (2014) UTC-5(4) Elev 230' A5010	
<b>OPR</b>	Michel Guay 418-487-4071 Reg PN	
<b>PF</b>	D-1,2,3,4,5,6	
<b>FLT PLN</b>	(bil) <b>FIG</b> Québec 866-GOMÉTÉO or 866-WXBRIEF (Toll free within Canada) or 866-541-4105 (Toll free within Canada & USA)	
<b>SERVICES</b>	<b>S</b> 1,5,7	
<b>A/D DATA</b>	Open water May-Nov. Sand and rock bottom. Dock depth 5'. <b>DOCKS</b> Ramp	
<b>COMM</b>	<b>ATF</b> tfc 123.4 5NM outside Alma MF area 3300 ASL <b>VFR ADV</b> Bagotville Tml 121.2	
<b>CAUTION</b>	Hvy tng zone N of river freq 123.4. Refer to Chicoutimi/St-Honoré VTPC.	

# CANADA WATER AERODROME SUPPLEMENT

Effective 0901Z 21 March 2024 to 0901Z 17 April 2025

B218 AERODROME/FACILITY DIRECTORY

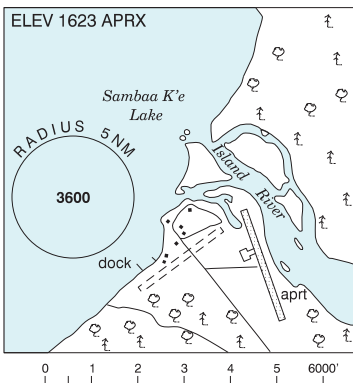
**SAKINAW LAKE SOUTH BC** — See GARDEN BAY / SAKINAW LAKE SOUTH

**SALMON LAKE ON** — See PARRY SOUND / SALMON LAKE

## SAMBAA K'E NT

CEG9

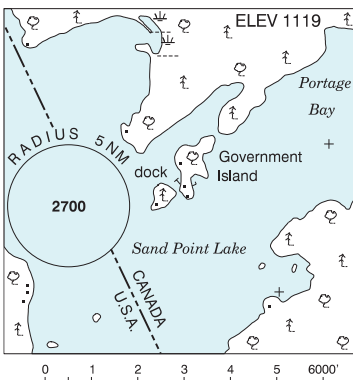
<b>REF</b>	N60 26 32 W121 14 10 21°E (2012) UTC-7(6) Elev 1623' aprx A5029
<b>OPR</b>	Sambaa K'e First Nation 867-206-2800 Reg
<b>PF</b>	C-1,4
<b>FLT PLN</b>	<b>FIC</b> Edmonton 866-WXBRIEF (Toll free within Canada) or 866-541-4102 (Toll free within Canada & USA)
<b>SERVICES</b>	<b>S</b> 5
<b>A/D DATA</b>	Open water mid Jun-mid Oct.
<b>COMM</b>	<b>ATF</b> tfc 123.2 5NM 4600 ASL



## SAND POINT LAKE ON

CJD6

<b>REF</b>	N48 20 W92 27 Adj 0° UTC-6(5) Elev 1119' A5007
<b>OPR</b>	Canada Border Services Agency 807-274-4949 Reg
<b>CUST</b>	AOE/15 888-226-7277 13-01Z± 15 May -30 Sep, 14-22Z 1 Oct -15 Oct
<b>FLT PLN</b>	Pilots to open/close VFR fit plan with London rdo, FISE or by phone <b>FIC</b> London 866-WXBRIEF (Toll free within Canada) or 866-541-4104 (Toll free within Canada & USA)
<b>SERVICES</b>	<b>S</b> 5
<b>A/D DATA</b>	Open water mid May-Nov. Steep shoreline.
<b>COMM</b>	<b>ATF</b> tfc 122.8 5NM 4200 ASL
<b>PRO</b>	Close/open Fit Pln thru London FIC-RCO at Atikokan 123.275 above 3000 ASL aprx.





## QUEBEC

## AERODROME/FACILITY DIRECTORY

## ROBERVAL QC

CYRJ

<b>REF</b>	N48 31 12 W72 15 57 2W 17°W (2013) UTC-5(4) Elev 586' A5010 LO6 LO7 HI5 HI6 CAP	
<b>OPR</b>	Services ADR Inc 418-275-2344 Cert	
<b>PF</b>	A-6,7,8 C-1,2,3,4,5	
<b>FLT PLN</b>	(bil)	
<b>FIC</b>	Québec 866-GOMÉTÉO or 866-WXBRIEF (Toll free within Canada) or 866-541-4105 (Toll free within Canada & USA)	
<b>ACC</b>	Montréal 800-633-1353	
<b>WX</b>	METAR H24. TAF 13-03Z†, issue times: 13, 20Z (DT 12, 14, 20Z).	
<b>SERVICES</b>		
<b>FUEL</b>	100LL, JA-1	
<b>OIL</b>	15W50, W100, W100+, Turbine Oil	
<b>S</b>	1,4,5,6	
<b>PVT ADV</b>	Services ADR Inc 130.3 1200-2200Z† Mon-Fri, 1300-2100Z† Sat-Sun Ltd availability.	
<b>RWY DATA</b>	Rwy 16(160°)/34(340°) 5000x150 ASPH Rwy 16 down 0.52%	
<b>RWY CERT</b>	Rwy 16/34 AGN IIIA	
<b>APRON</b>	Advs Services ADR Inc on 130.3 for prkg. Ltd availability.	
<b>RCR</b>	Opr 1200-2200Z† Mon-Fri 1300-2100Z† Sat-Sun. O/T for MEDEVAC 2 hr PN for RSC/CRFI, 3 hr PN for win maint. O/T for other acft 6 hr PN for RSC/CRFI and win maint. Call out chg 418-275-2344 PCN	
<b>LIGHTING</b>	16-AO(TE ME), 34-AO(TE ME) P2 ARCAL-122.2 type K	
<b>COMM</b>	(bil)	
<b>RCO</b>	Rouyn rdo 122.2 PTC avbl (RAAS) 11-03Z† Québec rdo 123.55 5680 (FISE) 126.7 (bcst)	
<b>MF</b>	Rouyn rdo 11-03Z† O/T tfc 122.2 5NM 3600 ASL (CAR 602.98)	
<b>NAV</b>		
<b>NDB</b>	RJ 378 (M) N48 32 41 W72 17 40	
<b>CAUTION</b>	Powerline W of thld Rwy 34 infringes lateral zoning.	

# Canadian Aviation Regulations

## Division III — General Operating and Flight Rules

For full listing please visit : <https://laws-lois.justice.gc.ca/eng/regulations/SOR-96-433/FullText.html#s-901.27>

### Visual Line-of-sight

- **901.11 (1)** Subject to subsection (2), no pilot shall operate a remotely piloted aircraft system unless the pilot or a visual observer has the aircraft in visual line-of-sight at all times during flight.
- **(2)** A pilot may operate a remotely piloted aircraft system without the pilot or a visual observer having the aircraft in visual line-of-sight if the operation is conducted in accordance with a special flight operations certificate — RPAS issued under section 903.03.

### Procedures

- **901.23 (1)** No pilot shall operate a remotely piloted aircraft system unless the following procedures are established:
  - **(a)** normal operating procedures, including pre-flight, take-off, launch, approach, landing and recovery procedures; and
  - **(b)** emergency procedures, including with respect to
    - **(i)** a control station failure,
    - **(ii)** an equipment failure,
    - **(iii)** a failure of the remotely piloted aircraft,
    - **(iv)** a loss of the command and control link,
    - **(v)** a fly-away, and
    - **(vi)** flight termination.
- **(2)** If the manufacturer of the remotely piloted aircraft system provides instructions with respect to the topics referred to in paragraphs (1)(a) and (b), the procedures established under subsection (1) shall reflect those instructions.
- **(3)** No pilot shall conduct the take-off or launch of a remotely piloted aircraft unless the procedures referred to in subsection (1) are reviewed before the flight by, and are immediately available to, each crew member.
- **(4)** No pilot shall operate a remotely piloted aircraft system unless the operation is conducted in accordance with the procedures referred to in subsection (1).

### Site Survey

**901.27** No pilot shall operate a remotely piloted aircraft system unless, before commencing operations, they determine that the site for take-off, launch, landing or recovery is suitable for the proposed operation by conducting a site survey that takes into account the following factors:

- **(a)** the boundaries of the area of operation;
- **(b)** the type of airspace and the applicable regulatory requirements;
- **(c)** the altitudes and routes to be used on the approach to and departure from the area of operation;
- **(d)** the proximity of manned aircraft operations;
- **(e)** the proximity of aerodromes, airports and heliports;
- **(f)** the location and height of obstacles, including wires, masts, buildings, cell phone towers and wind turbines;
- **(g)** the predominant weather and environmental conditions for the area of operation; and
- **(h)** the horizontal distances from persons not involved in the operation.

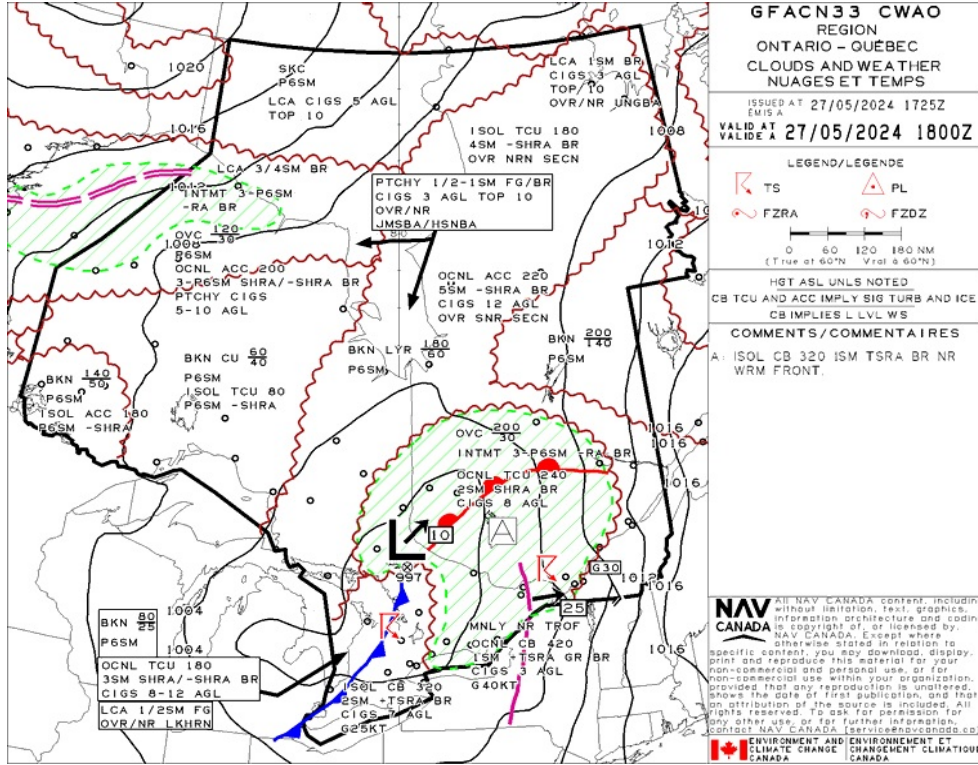
### Operations at or in the Vicinity of an Aerodrome, Airport or Heliport

- **901.47 (1)** No pilot shall operate a remotely piloted aircraft at or near an aerodrome that is listed in the *Canada Flight Supplement* or the *Water Aerodrome Supplement* in a manner that could interfere with an aircraft operating in the established traffic pattern.
- **(2)** Subject to section 901.73, no pilot shall operate a remotely piloted aircraft at a distance of less than
  - **(a)** three nautical miles from the centre of an airport; and
  - **(b)** one nautical mile from the centre of a heliport.
- **(3)** No pilot shall operate a remotely piloted aircraft at a distance of less than three nautical miles from the centre of an aerodrome operated under the authority of the Minister of National Defence unless the operation is conducted in accordance with a special flight operations certificate — RPAS issued under section 903.03.

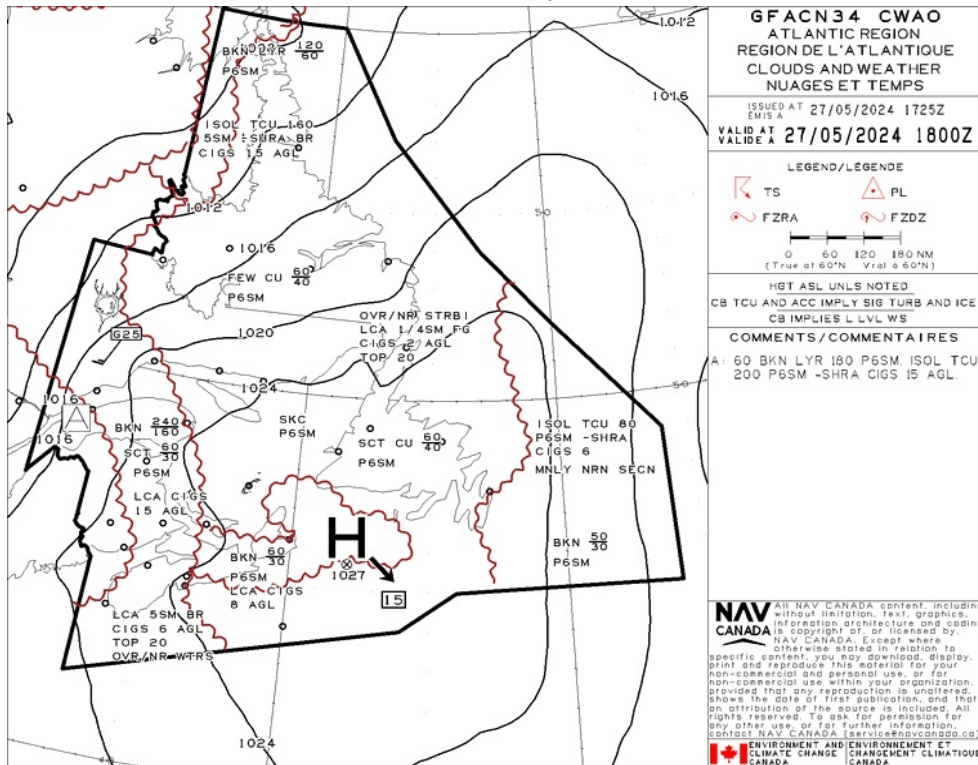
### Records

- **901.48 (1)** Every owner of a remotely piloted aircraft system shall keep the following records:
  - **(a)** a record containing the names of the pilots and other crew members who are involved in each flight and, in respect of the system, the time of each flight or series of flights; and
  - **(b)** a record containing the particulars of any mandatory action and any other maintenance action, modification or repair performed on the system, including
    - **(i)** the names of the persons who performed them,
    - **(ii)** the dates they were undertaken,
    - **(iii)** in the case of a modification, the manufacturer, model and a description of the part or equipment installed to modify the system, and
    - **(iv)** if applicable, any instructions provided to complete the work.
- **(2)** Every owner of a remotely piloted aircraft system shall ensure that the records referred to in subsection (1) are made available to the Minister on request and are retained for a period of
  - **(a)** in the case of the records referred to in paragraph (1)(a), 12 months after the day on which they are created; and
  - **(b)** in the case of the records referred to in paragraph (1)(b), 24 months after the day on which they are created.
- **(3)** Every owner of a remotely piloted aircraft system who transfers ownership of the system to another person shall, at the time of transfer, also deliver to that person all of the records referred to in paragraph (1)(b).

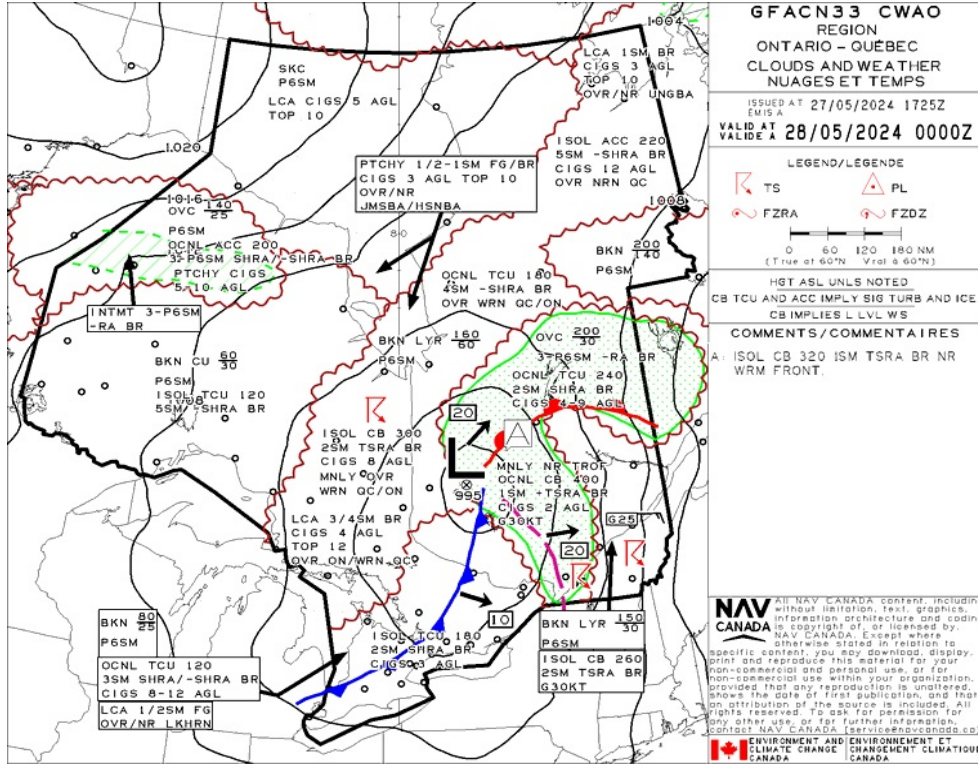
## GFA Issue time + 00 hr - CLOUDS AND WEATHER



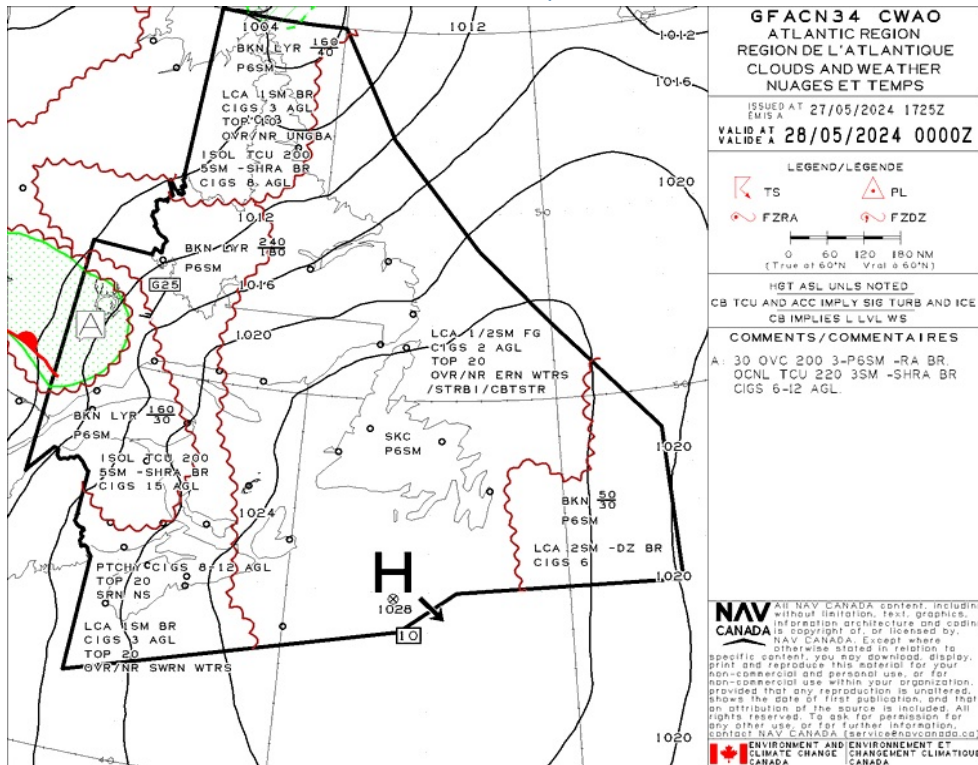
## GFA Issue time + 00 hr - TURBULENCE, ICING AND FREEZING LEVEL



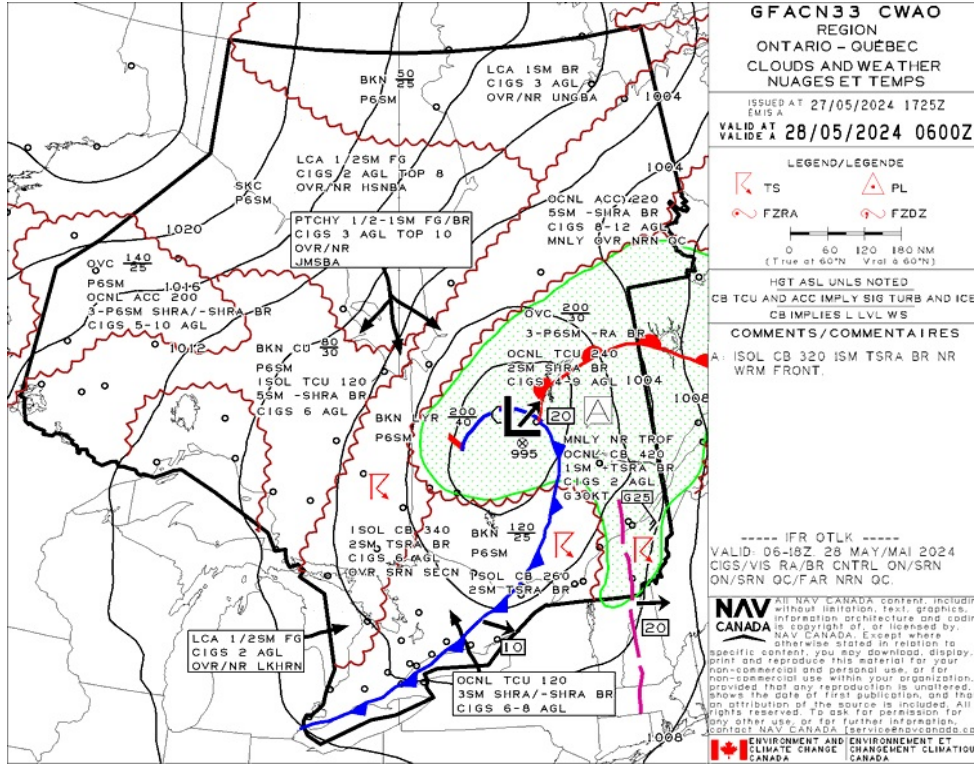
## GFA Issue time + 06 hr - CLOUDS AND WEATHER



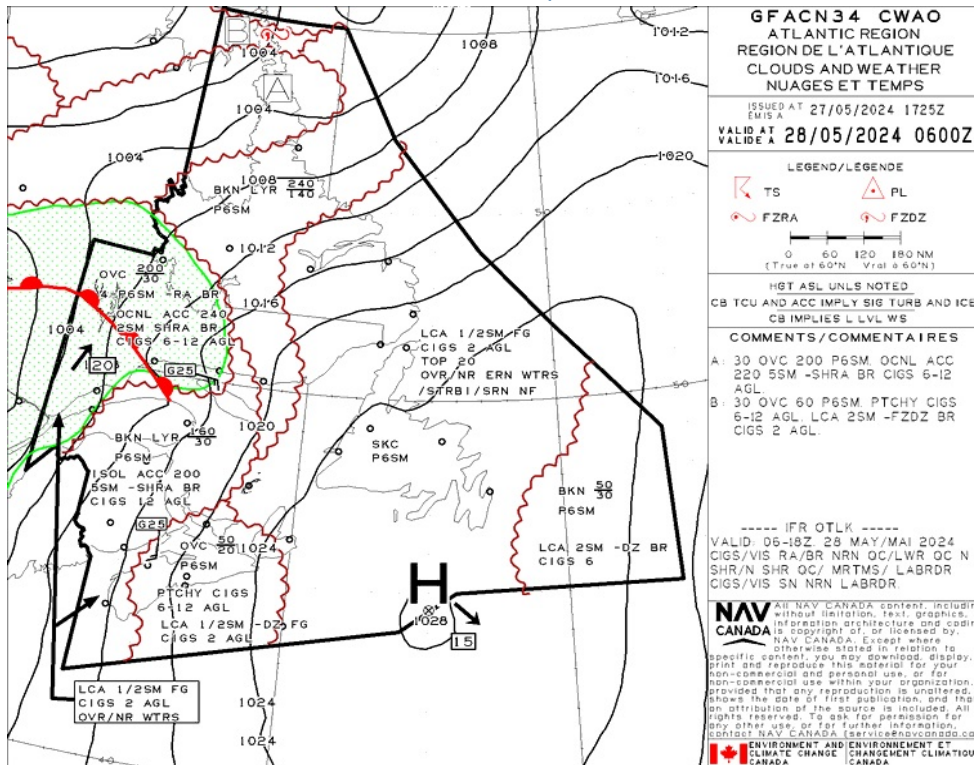
## GFA Issue time + 06 hr - TURBULENCE, ICING AND FREEZING LEVEL



## GFA Issue time + 12 hr - CLOUDS AND WEATHER



## GFA Issue time + 12 hr - TURBULENCE, ICING AND FREEZING LEVEL



ALMA - CYTF - Cert

NOTAM

(H1259/24 NOTAMR H0064/24  
Q) CZXX/QOEXX/IV/NBO/E/000/999/5243N05321W999  
A) CZUL CZQX CZQM B) 2404001701 C) 2407041700EST  
E) AIRSPACE SECURITY WARNING ISSUED BY THE DEPARTMENT OF TRANSPORT  
IN RESPONSE TO THE SECURITY SITUATION IN LEBANON. CANADIAN AIR  
OPERATORS AND OWNERS OF ACFT REGISTERED IN CANADA ARE ADVISED TO  
TAKE ALL POTENTIAL RISK INFO INTO ACCOUNT IN THEIR RISK  
ASSESSMENT AND ROUTING DECISIONS WHEN OPERATING IN LEBANESE  
AIRSPACE AND FIR BEIRUT (OLBB) DUE TO POTENTIAL RISK TO AVIATION  
FROM MIL ACT.

FR:  
AVERTISSEMENT RELATIF A LA SECURITE DE L'ESPACE AERIEN EMIS PAR  
LE MINISTERE DES TRANSPORTS EN REPONSE A LA SITUATION DE SECURITE  
EN LIBAN. ON RECOMMANDE AUX EXPLOITANTS AERIENS CANADIENS ET  
PROPRIETAIRES D'AVIONS IMMATRICULES AU CANADA DE PRENDRE EN  
COMPTE TOUTES LES INFO SUR LES RISQUES POTENTIELS DANS LEUR  
EVALUATION DES RISQUES ET LEURS DECISIONS D'ITINERAIRE LORSQU'ILS  
OPERENT DANS L'ESPACE AERIEN LIBANAIS ET LA REGION D'INFORMATION  
DE VOL DE BEYROUTH (OLBB), EN RAISON DU RISQUE POTENTIEL POUR  
L'AVIATION LIE A L'ACT MIL)

(H4360/23 NOTAMN  
Q) CZUL/QAFTT/IV/B0/E/000/999/5440N06941W999  
A) CZUL B) 2312201537 C) 2412191600EST  
E) TRIGGER NOTAM - AIP SUPPLEMENT 76/23 IN EFFECT - AUTOLAND  
PROCEDURES NOT RECOMMENDED IN RUNWAYS NOT COVERED BY ISED'S  
DESIGNATED 5G EXCLUSION AND PROTECTION ZONES

FR:  
NOTAM DECLENCHEUR - SUPPLEMENT D'AIP 76/23 EN VIGUEUR -  
PROCEDURES D'ATTERRISSAGE AUTOMATIQUE NON RECOMMANDEES SUR LES  
PISTES QUI NE FIGURENT PAS DANS UNE ZONE DESIGNEE D'EXCLUSION ET  
DE PROTECTION 5G DE L'ISDE)

(H2083/24 NOTAMN  
Q) CZUL/QCEAS/I/B0/E/000/999/4957N07412W201  
A) CZUL B) 2405281200 C) 2405281600  
E) CHIBOUGAMAU RADAR U/S. FLT WITHIN RADIUS  
200NM CENTRE 495729N 0741208W MAY BE DENIED  
ROUTING AND/OR ALT REQUESTS.

FR:  
RADAR CHIBOUGAMAU U/S. FLT A L'INTERIEUR D'UN RAYON  
200NM CENTRE 495730N 0741209W PEUVENT  
ANTICIPER UN REFUS POUR DEMANDE DE ROUTE ET/OU ALT.)

(H4366/23 NOTAMN  
Q) CZXX/QADTT/IV/B0/E/000/999/5243N05321W999  
A) CZUL CZQM CZQX B) 2312202144 C) 2412191600EST  
E) TRIGGER NOTAM - AIP SUPPLEMENT 26/18 IN EFFECT. ADJUSTMENT TO THE  
CANADA AIR DEFENCE IDENTIFICATION ZONE (ADIZ).

FR:  
NOTAM DECLENCHEUR - SUPPLEMENT D'AIP 26/18 EN VIGUEUR.  
MODIFICATION DE LA ZONE D'IDENTIFICATION DE DEFENSE AERIENNE DU  
CANADA)

(H1097/24 NOTAMN  
Q) CZUL/QARCH/IV/B0/E/000/999/5440N06941W999  
A) CZUL B) 2403271922 C) PERM  
E) AMEND PUBLICATIONS: AMEND MANDATORY IFR ROUTES:  
DELETE: E-BOUND L OLABA RNAV OLABA T791 ALONI DAVDA SSENA TALNO  
T721 TOXAL  
ADD: E-BOUND L OLABA RNAV OLABA T739 EPTUL T721 TOXAL

FR:  
MODIFIEZ PUBLICATIONS: SYSTEME DE ROUTES IFR OBLIGATOIRES:  
RETIRER: DIRECTION E L OLABA RNAV OLABA T791 ALONI DAVDA SSENA  
TALNO T721 TOXAL  
AJOUTEZ: DIRECTION E L OLABA RNAV OLABA T739 EPTUL T721 TOXAL)

(H1897/24 NOTAMN  
Q) CZUL/QWYTT/IV/B0/W/000/030/5440N06941W999  
A) CZUL B) 2405260000 C) 2412191600EST  
E) TRIGGER NOTAM - AIP SUPPLEMENT 35/24 WEF 26 MAY 2024 FLIGHT  
OPERATIONS: FOREST SPRAYING ABITIBI, LAC SAINT-JEAN, NORTH SHORE  
OF THE ST. LAWRENCE, BAS-SAINT-LAURENT REGION, AND GASPESIE

FR:  
NOTAM DECLENCHEUR - SUPPLEMENT D'AIP 35/24 WEF 26 MAI 2024.  
OPERATIONS AERIENNES: PULVERISATION FORESTIERE EN ABITIBI LAC  
SAINT-JEAN, RIVE NORD DU SAINT-LAURENT, BAS-SAINT-LAURENT ET  
GASPESIE  
F) SFC G) 3000FT AMSL)

(H2081/24 NOTAMN  
Q) CZUL/QCTAS/I/B0/E/000/999/4820N07100W050  
A) CZUL B) 2405290030 C) 2405291100  
E) BAGOTVILLE TAR U/S. ARR AND DEP IN CYRC CONTROL ZONE CAN  
ANTICIPATE DLA UP TO 45MIN. SURVEILLANCE IN CHICOUTIMI/ST-HONORE  
(CYRC) CLASS C AIRSPACE NOT AVBL.

FR:  
BAGOTVILLE TAR U/S. ARR ET DEP DANS LA ZONE DE CONTROLE DE  
CYRC PEUVENT ANTICIPER DES DLA JUSQU'A 45 MIN.  
SURVEILLANCE DE L'ESPACE AERIEN DE CLASSE C DE  
CHICOUTIMI/ST-HONORE (CYRC) NON AVBL.)

(H2008/24 NOTAMR H1804/24  
Q) CZUL/QARCH/IV/BO/E/000/999/5440N06941W999  
A) CZUL B) 2405241349 C) PERM  
E) AMEND PUBLICATIONS: AMEND MANDATORY IFR ROUTES:  
DELETE: CYOW H AND L DEP TO KBOS RNAV KODEX EPMOK SSENA BUGSY  
OOSHN ARR  
ADD: CYOW H AND L DEP TO KBOS RNAV KODEX EPMOK SSENA BUGSY ENE  
OOSHN ARR

FR:  
MODIFIEZ PUBLICATIONS: SYSTEME DE ROUTES IFR OBLIGATOIRES:  
RETIRER: CYOW H ET L DEP VERS KBOS RNAV KODEX EPMOK SSENA BUGSY  
OOSHN ARR  
AJOUTEZ: CYOW H ET L DEP VERS KBOS RNAV KODEX EPMOK SSENA BUGSY  
ENE OOSHN ARR)

## ALMA (RIVIERE LA GRANDE DECHARGE) - CGD2 - Reg

### NOTAM

(H1259/24 NOTAMR H0064/24  
Q) CZXX/QOEXX/IV/NBO/E/000/999/5243N05321W999  
A) CZUL CZQX CZQM B) 2404001701 C) 2407041700EST  
E) AIRSPACE SECURITY WARNING ISSUED BY THE DEPARTMENT OF TRANSPORT IN RESPONSE TO THE SECURITY SITUATION IN LEBANON. CANADIAN AIR OPERATORS AND OWNERS OF ACFT REGISTERED IN CANADA ARE ADVISED TO TAKE ALL POTENTIAL RISK INFO INTO ACCOUNT IN THEIR RISK ASSESSMENT AND ROUTING DECISIONS WHEN OPERATING IN LEBANESE AIRSPACE AND FIR BEIRUT (OLBB) DUE TO POTENTIAL RISK TO AVIATION FROM MIL ACT.

FR:  
AVERTISSEMENT RELATIF A LA SECURITE DE L'ESPACE AERIEN EMIS PAR LE MINISTERE DES TRANSPORTS EN REPONSE A LA SITUATION DE SECURITE EN LIBAN. ON RECOMMANDE AUX EXPLOITANTS AERIENS CANADIENS ET PROPRIETAIRES D'AVIONS IMMATRICULES AU CANADA DE PRENDRE EN COMPTE TOUTES LES INFO SUR LES RISQUES POTENTIELS DANS LEUR EVALUATION DES RISQUES ET LEURS DECISIONS D'ITINERAIRE LORSQU'ILS OPERENT DANS L'ESPACE AERIEN LIBANAIS ET LA REGION D'INFORMATION DE VOL DE BEYROUTH (OLBB), EN RAISON DU RISQUE POTENTIEL POUR L'AVIATION LIE A L'ACT MIL)

(H4360/23 NOTAMN  
Q) CZUL/QAFTT/IV/BO/E/000/999/5440N06941W999  
A) CZUL B) 2312201537 C) 2412191600EST  
E) TRIGGER NOTAM - AIP SUPPLEMENT 76/23 IN EFFECT - AUTOLAND PROCEDURES NOT RECOMMENDED IN RUNWAYS NOT COVERED BY ISED'S DESIGNATED 5G EXCLUSION AND PROTECTION ZONES

FR:  
NOTAM DECLENCHEUR - SUPPLEMENT D'AIP 76/23 EN VIGUEUR - PROCEDURES D'ATTERRISSAGE AUTOMATIQUE NON RECOMMANDEES SUR LES PISTES QUI NE FIGURENT PAS DANS UNE ZONE DESIGNEE D'EXCLUSION ET DE PROTECTION 5G DE L'ISDE)

(H2083/24 NOTAMN  
Q) CZUL/QCEAS/I/BO/E/000/999/4957N07412W201  
A) CZUL B) 2405281200 C) 2405281600  
E) CHIBOUGAMAU RADAR U/S. FLT WITHIN RADIUS 200NM CENTRE 495729N 0741208W MAY BE DENIED ROUTING AND/OR ALT REQUESTS.

FR:  
RADAR CHIBOUGAMAU U/S. FLT A L'INTERIEUR D'UN RAYON 200NM CENTRE 495730N 0741209W PEUVENT ANTICIPER UN REFUS POUR DEMANDE DE ROUTE ET/OU ALT.)

(H4366/23 NOTAMN  
Q) CZXX/QADTT/IV/BO/E/000/999/5243N05321W999  
A) CZUL CZQM CZQX B) 2312202144 C) 2412191600EST  
E) TRIGGER NOTAM - AIP SUPPLEMENT 26/18 IN EFFECT. ADJUSTMENT TO THE CANADA AIR DEFENCE IDENTIFICATION ZONE (ADIZ).

FR:  
NOTAM DECLENCHEUR - SUPPLEMENT D'AIP 26/18 EN VIGUEUR. MODIFICATION DE LA ZONE D'IDENTIFICATION DE DEFENSE AERIENNE DU CANADA)

(H1097/24 NOTAMN  
Q) CZUL/QARCH/IV/BO/E/000/999/5440N06941W999  
A) CZUL B) 2403271922 C) PERM  
E) AMEND PUBLICATIONS: AMEND MANDATORY IFR ROUTES:  
DELETE: E-BOUND L OLABA RNAV OLABA T791 ALONI DAVDA SSENA TALNO T721 TOXAL  
ADD: E-BOUND L OLABA RNAV OLABA T739 EPTUL T721 TOXAL

FR:  
MODIFIEZ PUBLICATIONS: SYSTEME DE ROUTES IFR OBLIGATOIRES:  
RETIRER: DIRECTION E L OLABA RNAV OLABA T791 ALONI DAVDA SSENA TALNO T721 TOXAL  
AJOUTEZ: DIRECTION E L OLABA RNAV OLABA T739 EPTUL T721 TOXAL)

(H1897/24 NOTAMN  
Q) CZUL/QWYTT/IV/BO/W/000/030/5440N06941W999  
A) CZUL B) 2405260000 C) 2412191600EST  
E) TRIGGER NOTAM - AIP SUPPLEMENT 35/24 WEF 26 MAY 2024 FLIGHT OPERATIONS: FOREST SPRAYING ABITIBI, LAC SAINT-JEAN, NORTH SHORE OF THE ST. LAWRENCE, BAS-SAINT-LAURENT REGION, AND GASPE/SIE

FR:  
NOTAM DECLENCHEUR - SUPPLEMENT D'AIP 35/24 WEF 26 MAI 2024. OPERATIONS AERIENNES: PULVERISATION FORESTIERE EN ABITIBI LAC SAINT-JEAN, RIVE NORD DU SAINT-LAURENT, BAS-SAINT-LAURENT ET GASPE/SIE  
F) SFC G) 3000FT AMSL)

(H2081/24 NOTAMN  
Q) CZUL/QCTAS/I/BO/E/000/999/4820N07100W050  
A) CZUL B) 2405290030 C) 2405291100  
E) BAGOTVILLE TAR U/S. ARR AND DEP IN CYRC CONTROL ZONE CAN ANTICIPATE DLA UP TO 45MIN. SURVEILLANCE IN CHICOUTIMI/ST-HONORE (CYRC) CLASS C AIRSPACE NOT AVBL.



FR:  
BAGOTVILLE TAR U/S. ARR ET DEP DANS LA ZONE DE CONTROLE DE  
CYRC PEUVENT ANTICIPER DES DLA JUSQU'A 45 MIN.  
SURVEILLANCE DE L'ESPACE AERIEN DE CLASSE C DE  
CHICOUTIMI/ST-HONORE (CYRC) NON AVBL.)

(H2008/24 NOTAMR H1804/24  
Q) CZUL/QARCH/IV/BO/E/000/999/5440N06941W999  
A) CZUL B) 2405241349 C) PERM  
E) AMEND PUBLICATIONS: AMEND MANDATORY IFR ROUTES:  
DELETE: CYOW H AND L DEP TO KBOS RNAV KODEX EPMOK SSENA BUGSY  
OOSHN ARR  
ADD: CYOW H AND L DEP TO KBOS RNAV KODEX EPMOK SSENA BUGSY ENE  
OOSHN ARR

FR:  
MODIFIEZ PUBLICATIONS: SYSTEME DE ROUTES IFR OBLIGATOIRES:  
RETIRER: CYOW H ET L DEP VERS KBOS RNAV KODEX EPMOK SSENA BUGSY  
OOSHN ARR  
AJOUTEZ: CYOW H ET L DEP VERS KBOS RNAV KODEX EPMOK SSENA BUGSY  
ENE OOSHN ARR)

## ST-CHARLES-DE-BOURGET - CSA5 - Reg

### NOTAM

(H1259/24 NOTAMR H0064/24  
Q) CZXX/QOEXX/IV/NBO/E/000/999/5243N05321W999  
A) CZUL CZQX CZQM B) 2404001701 C) 2407041700EST  
E) AIRSPACE SECURITY WARNING ISSUED BY THE DEPARTMENT OF TRANSPORT  
IN RESPONSE TO THE SECURITY SITUATION IN LEBANON. CANADIAN AIR  
OPERATORS AND OWNERS OF ACFT REGISTERED IN CANADA ARE ADVISED TO  
TAKE ALL POTENTIAL RISK INFO INTO ACCOUNT IN THEIR RISK  
ASSESSMENT AND ROUTING DECISIONS WHEN OPERATING IN LEBANESE  
AIRSPACE AND FIR BEIRUT (OLBB) DUE TO POTENTIAL RISK TO AVIATION  
FROM MIL ACT.

FR:  
AVERTISSEMENT RELATIF A LA SECURITE DE L'ESPACE AERIEN EMIS PAR  
LE MINISTERE DES TRANSPORTS EN REPONSE A LA SITUATION DE SECURITE  
EN LIBAN. ON RECOMMANDE AUX EXPLOITANTS AERIENS CANADIENS ET  
PROPRIETAIRES D'AVIONS IMMATRICULES AU CANADA DE PRENDRE EN  
COMPTE TOUTES LES INFO SUR LES RISQUES POTENTIELS DANS LEUR  
EVALUATION DES RISQUES ET LEURS DECISIONS D'ITINERAIRE LORSQU'ILS  
OPERENT DANS L'ESPACE AERIEN LIBANAIS ET LA REGION D'INFORMATION  
DE VOL DE BEYROUTH (OLBB), EN RAISON DU RISQUE POTENTIEL POUR  
L'AVIATION LIE A L'ACT MIL)

(H4360/23 NOTAMN  
Q) CZUL/QAFTT/IV/BO/E/000/999/5440N06941W999  
A) CZUL B) 2312201537 C) 2412191600EST  
E) TRIGGER NOTAM - AIP SUPPLEMENT 76/23 IN EFFECT - AUTOLAND  
PROCEDURES NOT RECOMMENDED IN RUNWAYS NOT COVERED BY ISED'S  
DESIGNATED 5G EXCLUSION AND PROTECTION ZONES

FR:  
NOTAM DECLENCHEUR - SUPPLEMENT D'AIP 76/23 EN VIGUEUR -  
PROCEDURES D'ATTERRISSAGE AUTOMATIQUE NON RECOMMANDEES SUR LES  
PISTES QUI NE FIGURENT PAS DANS UNE ZONE DESIGNEE D'EXCLUSION ET  
DE PROTECTION 5G DE L'ISDE)

(H2083/24 NOTAMN  
Q) CZUL/QCEAS/I/BO/E/000/999/4957N07412W201  
A) CZUL B) 2405281200 C) 2405281600  
E) CHIBOUGAMAU RADAR U/S. FLT WITHIN RADIUS  
200NM CENTRE 495729N 0741208W MAY BE DENIED  
ROUTING AND/OR ALT REQUESTS.

FR:  
RADAR CHIBOUGAMAU U/S. FLT A L'INTERIEUR D'UN RAYON  
200NM CENTRE 495730N 0741209W PEUVENT  
ANTICIPER UN REFUS POUR DEMANDE DE ROUTE ET/OU ALT.)

(H4366/23 NOTAMN  
Q) CZXX/QADTT/IV/BO/E/000/999/5243N05321W999  
A) CZUL CZQM CZQX B) 2312202144 C) 2412191600EST  
E) TRIGGER NOTAM - AIP SUPPLEMENT 26/18 IN EFFECT. ADJUSTMENT TO THE  
CANADA AIR DEFENCE IDENTIFICATION ZONE (ADIZ).

FR:  
NOTAM DECLENCHEUR - SUPPLEMENT D'AIP 26/18 EN VIGUEUR.  
MODIFICATION DE LA ZONE D'IDENTIFICATION DE DEFENSE AERIENNE DU  
CANADA)

(H1097/24 NOTAMN  
Q) CZUL/QARCH/IV/BO/E/000/999/5440N06941W999  
A) CZUL B) 2403271922 C) PERM  
E) AMEND PUBLICATIONS: AMEND MANDATORY IFR ROUTES:  
DELETE: E-BOUND L OLABA RNAV OLABA T791 ALONI DAVDA SSENA TALNO  
T721 TOXAL  
ADD: E-BOUND L OLABA RNAV OLABA T739 EPTUL T721 TOXAL

FR:  
MODIFIEZ PUBLICATIONS: SYSTEME DE ROUTES IFR OBLIGATOIRES:  
RETIRER: DIRECTION E L OLABA RNAV OLABA T791 ALONI DAVDA SSENA  
TALNO T721 TOXAL  
AJOUTEZ: DIRECTION E L OLABA RNAV OLABA T739 EPTUL T721 TOXAL)

(H1607/24 NOTAMN  
Q) CZUL/QNNAS/IV/BO/AE/000/999/4820N07100W025  
A) CYBG B) 2405021819 C) 2408012359  
E) BAGOTVILLE TACAN XBG 111.8MHZ/CH55X U/S

FR:  
BAGOTVILLE TACAN XBG 111.8MHZ/CH55X U/S)

(H1897/24 NOTAMN  
Q) CZUL/QWYTT/IV/BO/W/000/030/5440N06941W999  
A) CZUL B) 2405260000 C) 2412191600EST  
E) TRIGGER NOTAM - AIP SUPPLEMENT 35/24 WEF 26 MAY 2024 FLIGHT  
OPERATIONS: FOREST SPRAYING ABITIBI, LAC SAINT-JEAN, NORTH SHORE  
OF THE ST. LAWRENCE, BAS-SAINT-LAURENT REGION, AND GASPEISIE

FR:  
NOTAM DECLENCHEUR - SUPPLEMENT D'AIP 35/24 WEF 26 MAI 2024.  
OPERATIONS AERIENNES: PULVERISATION FORESTIERE EN ABITIBI LAC  
SAINT-JEAN, RIVE NORD DU SAINT-LAURENT, BAS-SAINT-LAURENT ET  
GASPEISIE  
F) SFC G) 3000FT AMSL)

(H2081/24 NOTAMN  
Q) CZUL/QCTAS/I/BO/E/000/999/4820N07100W050  
A) CZUL B) 2405290030 C) 2405291100  
E) BAGOTVILLE TAR U/S. ARR AND DEP IN CYRC CONTROL ZONE CAN  
ANTICIPATE DLA UP TO 45MIN. SURVEILLANCE IN CHICOUTIMI/ST-HONORE  
(CYRC) CLASS C AIRSPACE NOT AVBL.

FR:  
BAGOTVILLE TAR U/S. ARR ET DEP DANS LA ZONE DE CONTROLE DE  
CYRC PEUVENT ANTICIPER DES DLA JUSQU'A 45 MIN.  
SURVEILLANCE DE L'ESPACE AERIEN DE CLASSE C DE  
CHICOUTIMI/ST-HONORE (CYRC) NON AVBL.)

(H2008/24 NOTAMR H1804/24  
Q) CZUL/QARCH/IV/BO/E/000/999/5440N06941W999  
A) CZUL B) 2405241349 C) PERM  
E) AMEND PUBLICATIONS: AMEND MANDATORY IFR ROUTES:  
DELETE: CYOW H AND L DEP TO KBOS RNAV KODEX EPMOK SSENA BUGSY  
OOSHN ARR  
ADD: CYOW H AND L DEP TO KBOS RNAV KODEX EPMOK SSENA BUGSY ENE  
OOSHN ARR

FR:  
MODIFIEZ PUBLICATIONS: SYSTEME DE ROUTES IFR OBLIGATOIRES:  
RETIRER: CYOW H ET L DEP VERS KBOS RNAV KODEX EPMOK SSENA BUGSY  
OOSHN ARR  
AJOUTEZ: CYOW H ET L DEP VERS KBOS RNAV KODEX EPMOK SSENA BUGSY  
ENE OOSHN ARR)

ROBERVAL - CYRJ - Cert

## NOTAM

(H1259/24 NOTAMR H0064/24  
 Q) CZXX/QOEXX/IV/NBO/E/000/999/5243N05321W999  
 A) CZUL CZQX CZQM B) 2404001701 C) 2407041700EST  
 E) AIRSPACE SECURITY WARNING ISSUED BY THE DEPARTMENT OF TRANSPORT IN RESPONSE TO THE SECURITY SITUATION IN LEBANON. CANADIAN AIR OPERATORS AND OWNERS OF ACFT REGISTERED IN CANADA ARE ADVISED TO TAKE ALL POTENTIAL RISK INFO INTO ACCOUNT IN THEIR RISK ASSESSMENT AND ROUTING DECISIONS WHEN OPERATING IN LEBANESE AIRSPACE AND FIR BEIRUT (OLBB) DUE TO POTENTIAL RISK TO AVIATION FROM MIL ACT.

FR:  
 AVERTISSEMENT RELATIF A LA SECURITE DE L'ESPACE AERIEN EMIS PAR LE MINISTERE DES TRANSPORTS EN REPONSE A LA SITUATION DE SECURITE EN LIBAN. ON RECOMMANDE AUX EXPLOITANTS AERIENS CANADIENS ET PROPRIETAIRES D'AVIONS IMMATRICULES AU CANADA DE PRENDRE EN COMPTE TOUTES LES INFO SUR LES RISQUES POTENTIELS DANS LEUR EVALUATION DES RISQUES ET LEURS DECISIONS D'ITINERAIRE LORSQU'ILS OPERENT DANS L'ESPACE AERIEN LIBANAIS ET LA REGION D'INFORMATION DE VOL DE BEYROUTH (OLBB), EN RAISON DU RISQUE POTENTIEL POUR L'AVIATION LIE A L'ACT MIL)

(H4360/23 NOTAMN  
 Q) CZUL/QAFTT/IV/BO/E/000/999/5440N06941W999  
 A) CZUL B) 2312201537 C) 2412191600EST  
 E) TRIGGER NOTAM - AIP SUPPLEMENT 76/23 IN EFFECT - AUTOLAND PROCEDURES NOT RECOMMENDED IN RUNWAYS NOT COVERED BY ISED'S DESIGNATED 5G EXCLUSION AND PROTECTION ZONES

FR:  
 NOTAM DECLENCHEUR - SUPPLEMENT D'AIP 76/23 EN VIGUEUR - PROCEDURES D'ATTERRISSAGE AUTOMATIQUE NON RECOMMANDEES SUR LES PISTES QUI NE FIGURENT PAS DANS UNE ZONE DESIGNEE D'EXCLUSION ET DE PROTECTION 5G DE L'ISDE)

(H2083/24 NOTAMN  
 Q) CZUL/QCEAS/I/BO/E/000/999/4957N07412W201  
 A) CZUL B) 2405281200 C) 2405281600  
 E) CHIBOUGAMAU RADAR U/S. FLT WITHIN RADIUS 200NM CENTRE 495729N 0741208W MAY BE DENIED ROUTING AND/OR ALT REQUESTS.

FR:  
 RADAR CHIBOUGAMAU U/S. FLT A L'INTERIEUR D'UN RAYON 200NM CENTRE 495730N 0741209W PEUVENT ANTICIPER UN REFUS POUR DEMANDE DE ROUTE ET/OU ALT.)

(H4366/23 NOTAMN  
 Q) CZXX/QADTT/IV/BO/E/000/999/5243N05321W999  
 A) CZUL CZQM CZQX B) 2312202144 C) 2412191600EST  
 E) TRIGGER NOTAM - AIP SUPPLEMENT 26/18 IN EFFECT. ADJUSTMENT TO THE CANADA AIR DEFENCE IDENTIFICATION ZONE (ADIZ).

FR:  
 NOTAM DECLENCHEUR - SUPPLEMENT D'AIP 26/18 EN VIGUEUR. MODIFICATION DE LA ZONE D'IDENTIFICATION DE DEFENSE AERIENNE DU CANADA)

(H1097/24 NOTAMN  
 Q) CZUL/QARCH/IV/BO/E/000/999/5440N06941W999  
 A) CZUL B) 2403271922 C) PERM  
 E) AMEND PUBLICATIONS: AMEND MANDATORY IFR ROUTES:  
 DELETE: E-BOUND L OLABA RNAV OLABA T791 ALONI DAVDA SSENA TALNO T721 TOXAL  
 ADD: E-BOUND L OLABA RNAV OLABA T739 EPTUL T721 TOXAL

FR:  
 MODIFIEZ PUBLICATIONS: SYSTEME DE ROUTES IFR OBLIGATOIRES:  
 RETIRER: DIRECTION E L OLABA RNAV OLABA T791 ALONI DAVDA SSENA TALNO T721 TOXAL  
 AJOUTEZ: DIRECTION E L OLABA RNAV OLABA T739 EPTUL T721 TOXAL)

(H1897/24 NOTAMN  
 Q) CZUL/QWYTT/IV/BO/W/000/030/5440N06941W999  
 A) CZUL B) 2405260000 C) 2412191600EST  
 E) TRIGGER NOTAM - AIP SUPPLEMENT 35/24 WEF 26 MAY 2024 FLIGHT OPERATIONS: FOREST SPRAYING ABITIBI, LAC SAINT-JEAN, NORTH SHORE OF THE ST. LAWRENCE, BAS-SAINT-LAURENT REGION, AND GASPE/SIE

FR:  
 NOTAM DECLENCHEUR - SUPPLEMENT D'AIP 35/24 WEF 26 MAI 2024. OPERATIONS AERIENNES: PULVERISATION FORESTIERE EN ABITIBI LAC SAINT-JEAN, RIVE NORD DU SAINT-LAURENT, BAS-SAINT-LAURENT ET GASPE/SIE  
 F) SFC G) 3000FT AMSL)

(H2008/24 NOTAMR H1804/24  
 Q) CZUL/QARCH/IV/BO/E/000/999/5440N06941W999  
 A) CZUL B) 2405241349 C) PERM  
 E) AMEND PUBLICATIONS: AMEND MANDATORY IFR ROUTES:  
 DELETE: CYOW H AND L DEP TO KBOS RNAV KODEX EPMOK SSENA BUGSY OOSH ARR  
 ADD: CYOW H AND L DEP TO KBOS RNAV KODEX EPMOK SSENA BUGSY ENR

OOSHN ARR

FR:

MODIFIEZ PUBLICATIONS: SYSTEME DE ROUTES IFR OBLIGATOIRES:  
RETIRER: CYOW H ET L DEP VERS KBOS RNAV KODEX EPMOK SSENA BUGSY  
OOSHN ARR

AJOUTEZ: CYOW H ET L DEP VERS KBOS RNAV KODEX EPMOK SSENA BUGSY  
ENE OOSHN ARR)

(Q0508/24 NOTAMN

Q) CZUL/QMDCH/IV/NBO/A/000/999/4831N07216W005

A) CYRJ B) 2405141423 C) 2408141400EST

E) RWY 16 TODA TO READ 5495FT

FR:

RWY 16 TODA DEVRAIT LIRE 5495FT)